



SHOTBLASTING MACHINES

# CABINETS



**CYM** MATERIALES S.A.  
INDUSTRIAL SOLUTIONS

# BLASTING CABINETS

**CYM** Materiales SA has a line of cabinets specially designed for shot blasting of small productions that stand out for their low cost and great versatility. They also have a series of optional accessories to adapt to the needs of each customer.

They are ideal for mold cleaning, burr removal, glass and plastic opaquing, industrial maintenance, shot peening, micro castings, aluminum injection, among many other applications.

CYM cabinets work indistinctly with metallic, mineral or vegetable abrasives (such as steel shot, glass microspheres, aluminum oxides, quartz, walnut shells, among others).

Depending on the model of equipment and its production capacity, the discharge can be done by suction nozzles or by a pressure system.

Our cabinets guarantee the operator's safety and the care of the environment, obtaining optimum quality results without emitting any type of dust pollution or contaminants and with a low noise level.

## ADVANTAGES IN THE USE OF SHOT BLASTING EQUIPMENT

- Homogeneity of finishing in the processed parts.
- It does not require specialized labor.
- With a correct operation of the equipment, there are no health problems in personnel or damages in the installations, not contaminating the environment.



## CONSTRUCTION FEATURES - HOBBIST LINE

- Made of 2 mm thick folded and welded sheet metal with internal grill for parts support.
- Visor made of laminated glass of easy replacement and large dimensions giving excellent visibility to the operator.
- Wide glove compartments that guarantee the operator's mobility to manipulate the abrasive projection nozzle. High wear resistant rubber gloves for operator protection.
- Interior lighting in the ceiling of the cabinet with double external fluorescent tube and laminated protection glass.
- High performance gun made of cast aluminum and ceramic or tungsten carbide nozzle.
- Metering valve for spraying any type of abrasive.
- Pneumatically operated foot pedal for opening and cutting of abrasive.
- Filter Compressed air pressure regulator for different types of applications
- High particle retention cartridge dust extractor and centrifugal extractor to keep the cabinet ventilated and free of dust in suspension for the correct visibility of the operator operator visibility.



Cym shotblasting cabinets - Hobbyist Line												
Model	Dimensions (mm)								Watt	Suction projection		
	Shot blasting chamber			Loading Door		Equipment				Nozzle	Injector	Air m3/min
	Front	Depth	Height	Base	Height	Front	Depth	Height				
CY48S	1200	610	575	500	495	1320	930	1670	1236	Ø 6	Ø 3 Ø 4	0.6
CS37S	940	610	575	500	490	1040	930	1650	220			1

# CONSTRUCTION FEATURES - INDUSTRIAL LINE

## MAIN CABINET

- Built in 3.2 mm thick folded and welded sheet metal and 6.4 mm thick sheet metal parts loading doors.
- Reinforced internal grid for parts support.
- Visor made of laminated glass of easy replacement and large dimensions, providing excellent visibility to the operator.
- Wide glove compartments that guarantee the operator's mobility to manipulate the abrasive projection nozzle.
- High wear resistant rubber gloves to protect the operator.
- Abrasive cleaning system by means of air currents that leaves the clean abrasive ready for reuse deposited in the cabin hopper.
- Interior lighting in the ceiling of the cabinet with double energy saving LED tubes and laminated protection glass.
- Design versatility: its modular construction allows the abrasive spraying system to be quickly transformed from suction to pressure, or vice versa, without the need for welding or equipment modifications.

## DUST EXTRACTOR

- High particle retention cartridge dust collector and centrifugal extractor to keep the cabinet ventilated and free of dust in suspension for the correct visibility of the operator.
- Several models of vacuum cleaners allow to select the model according to the level of dust generated by the process.
- Filtration efficiency  $\geq 0.5$  microns at 99.9%.
- Particulate emission less than 5 mmg/Nm<sup>3</sup>.



## ABRASIVE SPRAYING SYSTEM

Two abrasive spraying systems, by suction and by pressure.

### SUCTION

- Recommended for low production in cleaning and retouching processes for general use.
- It has a high performance gun made of cast aluminum and a tungsten carbide nozzle.
- The compressed air sucks the abrasive, projecting it through the blasting nozzle.
- Metering valve with regulation to project any type of abrasive.
- Pneumatically operated foot pedal for opening and cutting the abrasive.
- Compressed air pressure regulating filter for different types of applications.



### PRESSURE

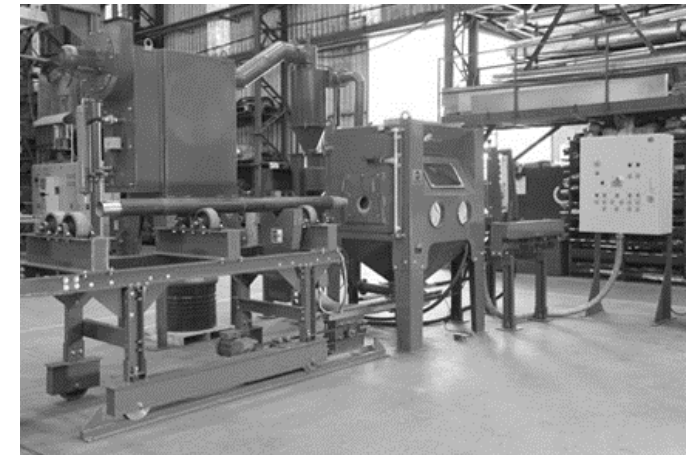
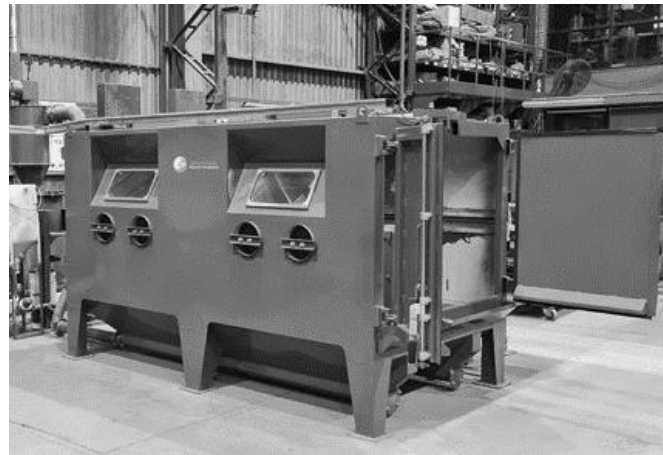
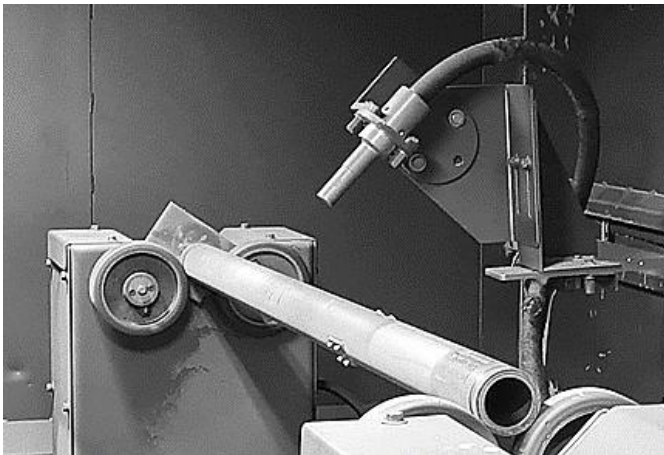
- Recommended for intensive work, it allows abrasive to be projected at low and high speeds.
- The abrasive is introduced into a pressure hopper and once pressurized, it is expelled through the dosing valve, the hose and then through the blasting nozzle.
- Shot blasting tank manufactured under ASME code, semi-elliptical head and conical bottom with cylindrical waist.
- Shot blasting nozzles of tungsten carbide or boron as required.
- Metering valve with regulation to project any type of abrasive.
- Pneumatically operated foot pedal for opening and cutting of abrasive.
- Compressed air pressure regulating filter for different types of applications and abrasive projection speeds.

## OPTIONAL / ACCESSORIES

- Air blast gun for blast and dust removal.
- High abrasion resistant rubber lining inside the main cabinet.
- Pressure suction cabinet refurbishing kit.
- Pressure to suction cabinet refurbishing kit.
- Parts movement systems.
  - Mobile workpiece support carriage with turntable for processing heavy workpieces.
  - Rotary drum for shot blasting small parts in bulk.
  - Roller conveyors or parallel wheels to process tubes, profiles or gas cylinders for continuous passages.
- Automatic cleaning system for dust collector filters.
- Nozzle handling systems for automatic blasting processes.
- Magna Valve for abrasive flow control.
- Silencer for dust extractor air outlet.

## APPLICATIONS

- Removal of rust and flakes on metallic surfaces.
- Preparation of surfaces for application of all types of coatings.
- Removal of all types of paint, liquid or powder.
- Removal of burrs, foundry sand, forging lamellae and machining marks.
- Decorative finishing on stainless steel, aluminum and other non-ferrous metals.
- Etching of glass, stone and metals.
- Cleaning of injection or extrusion molds.
- Shot peening processes.



## TECHNICAL DETAILS - INDUSTRIAL LINE.

BAST CABINETS Cym - Industrial Line														
MODELS		DIMENSIONS (MM)								DUST COLLECTOR		PROYECTION		
		SHOT BLASTING CHAMBER			LOADING DOOR		EQUIPMENT							
		FRONT	DEPTH	HEIGHT	BASE	HEIGHT	FRONT	DEPTH	HEIGHT	MODEL	HP	NOZZLE	INJECTOR	AIR M3/MIN
Suction	CY 0807 S	800	700	700	450	610	950	1050	1750	CART1V-MC	0.5	Ø 8	Ø 3 Ø 4	0.6 1
	CY 0807 SG	800	700	700	450	610	950	1280	1750	CART1V-MG	1.5			
	CY 1210 S	1200	1000	1000	800	800	1350	1500	2050	CART1V-MG	1.5			
	CY 1618 S	1600	1800	1150	1500	1200	2650	3600	2950	CART2	4			
Pression	CY 0807 P	800	700	700	450	610	800	1200	2400	CART1V-MG	1.5	Ø 5 Ø 6	-	1.5 2.5
	CY 1210 P	1200	1000	1000	800	800	1350	2340	2460	CART1V-MG	1.5			
	CY 1210 P-CART2	1200	1000	1000	800	800	1350	2340	2460	CART2	4			
	CY 1618 P-CART2	1600	1800	1150	1500	1200	2640	3620	2950	CART2	4			
	CY 1618 P-ARC	1600	1800	1150	1500	1200	2640	3620	4550	CART2	5			
	CY 3517 P-CART4	3500	1700	1300	1500	1200	5000	3800	2900	CART4	7.5			

Note:

(1) Values for pressures of 7 kg/cm<sup>2</sup> - (2) If the equipment you are looking for is not listed in this catalog, please contact our sales or engineering departments.

(2) If you do not find the equipment you need in this catalog, please contact our sales or engineering departments, who can help you develop the best equipment to suit your needs, seeking to reduce your operating costs and increase profitability in your production systems.



# CYM MATERIALES S.A.

INDUSTRIAL SOLUTIONS



## FACTORY AND HEADQUARTERS

Brig. Estanislao Lopez N° 6

[S2108AIB] Soldini - Santa Fé - Argentina

☎ +54 341 490 1100

📞 +54 9 341 515-0249

✉ info@cym.com.ar

www.cym.com.ar

